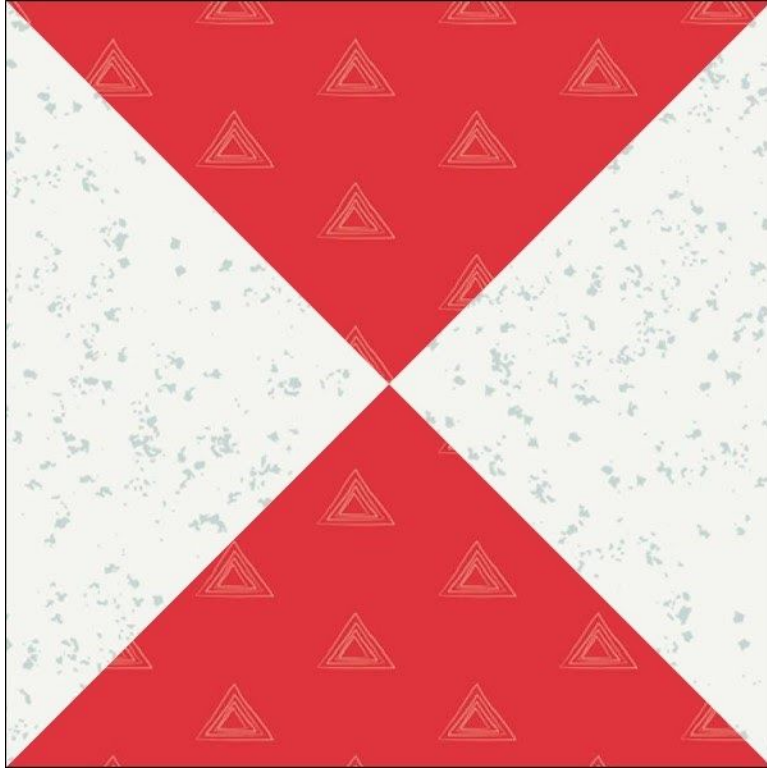


Quarter Square Triangle Setting Blocks



8" x 8" finished block size

QST Setting Blocks Cutting Instructions

(40 blocks)

From the white fabric, cut:

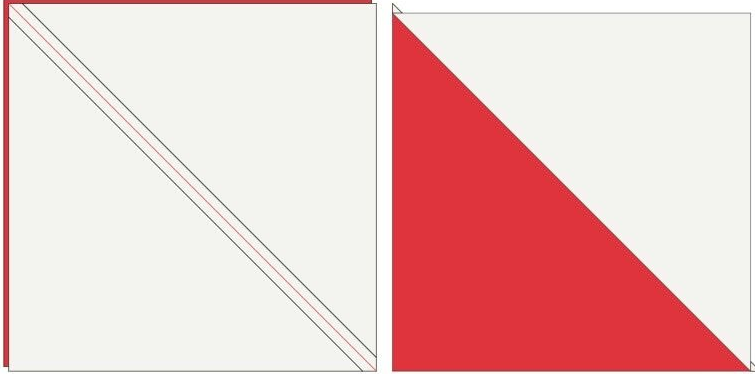
(20) $9\frac{1}{2}$ " x $9\frac{1}{2}$ "

From the red fabric, cut:

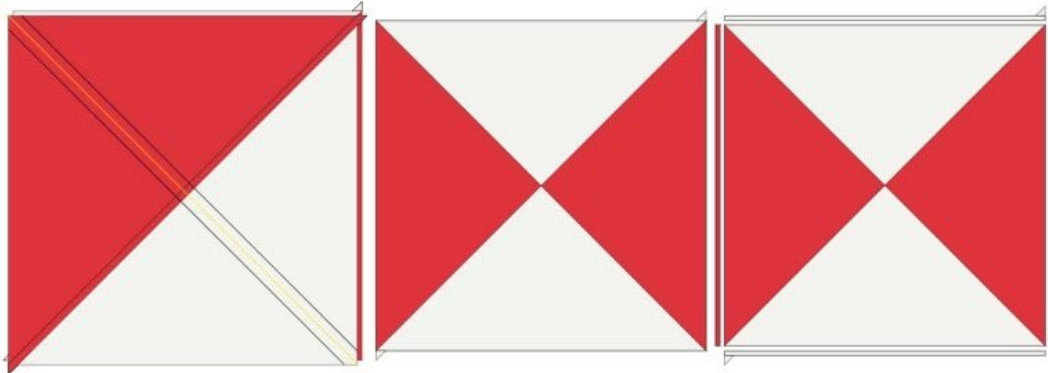
(20) $9\frac{1}{2}$ " x $9\frac{1}{2}$ "

Quarter Square Triangles

Mark the wrong side of the white $9\frac{1}{2}$ " square in half diagonally once. Lay a marked square over a red $9\frac{1}{2}$ " square, right sides together. Sew $\frac{1}{4}$ " from each side of the marked line. Cut apart on the marked line and press to make 2 HST.

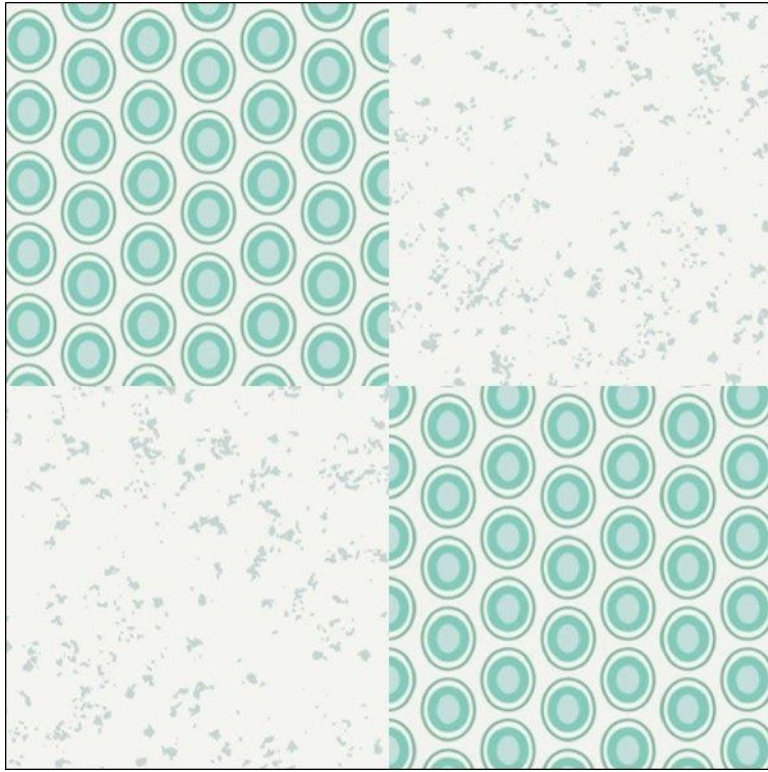


Take the HST from the previous step. Mark the wrong side of one of the HST in half diagonally once. Lay the marked HST over the other HST with opposite colors facing each other. Sew $\frac{1}{4}$ " from each side of the marked line. Cut apart on the marked line to make 2 white/red QST. Trim QST units to $8\frac{1}{2}$ " x $8\frac{1}{2}$ " square.



Repeat to make 40 Quarter Square Triangle setting blocks.

Four Patch Setting Blocks



8" x 8" finished block size

Four Patch Setting Blocks Cutting Instructions

(16 blocks)

From the white fabric, cut:

(32) 4½" x 4½"

From the light aqua fabric, cut:

(32) 4½" x 4½"

Simple Version Setting

(25 blocks)

From the white fabric, cut:

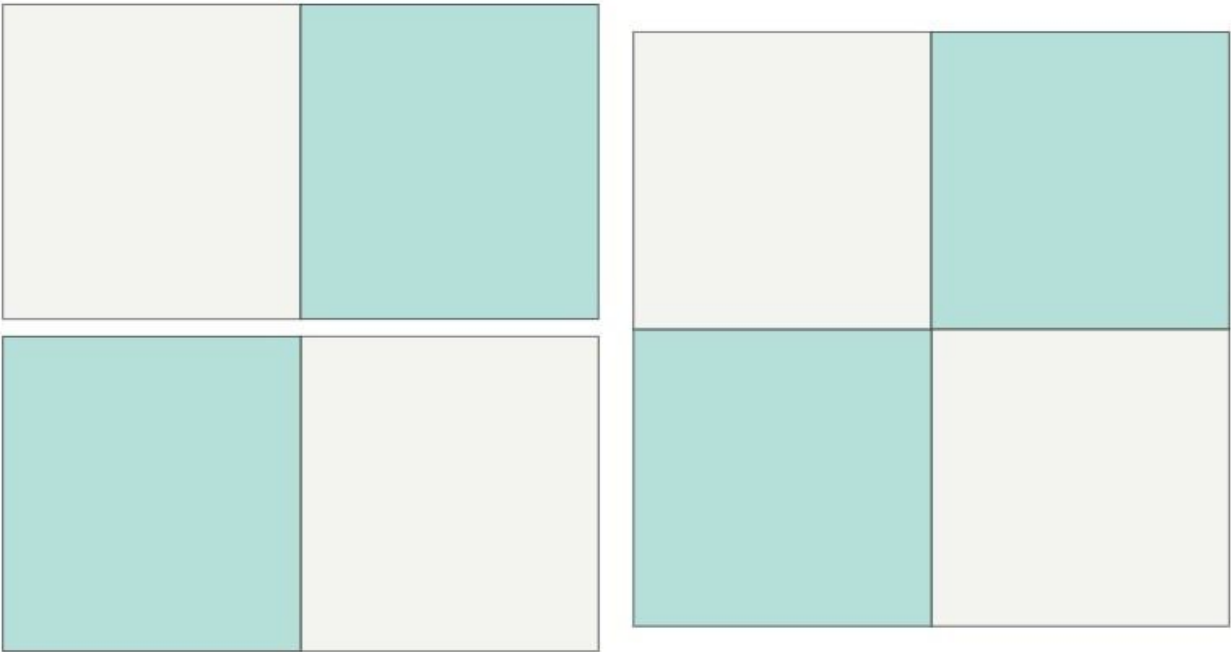
(50) 4½" x 4½"

From the light aqua fabric, cut:

(50) 4½" x 4½"

Four Patches

Arrange white and light aqua $4\frac{1}{2}$ " squares as shown below. Sew together in pairs and press. Then sew the pairs together. Four Patch unit measures $8\frac{1}{2}$ " x $8\frac{1}{2}$ " unfinished.



Repeat to make 16 blocks. (*25 blocks for Simple Setting.*)